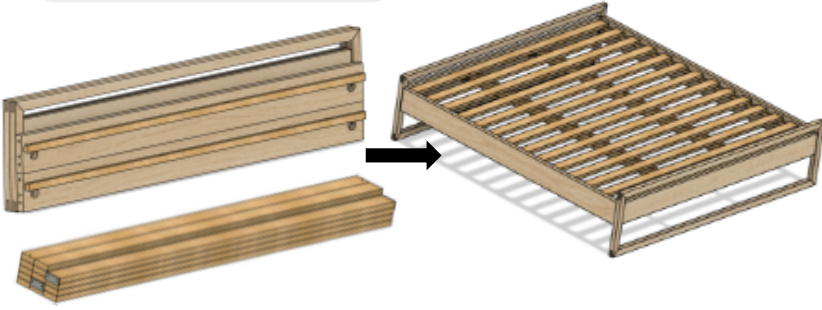


**Houtbaai Bed
ASSEMBLY**
Installing the legs and slats



REQUIRED

2 Persons



INCLUDED

Hex Key



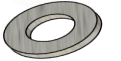
M6 Bolts

X8-King/Queen X4-Double



Washers

X8-King/Queen X4 Double



Half Moon

Fittings **X4**



13mm Mini
Wrench



Support Bracket

X4-King/Queen X2-Double



30mm Screws

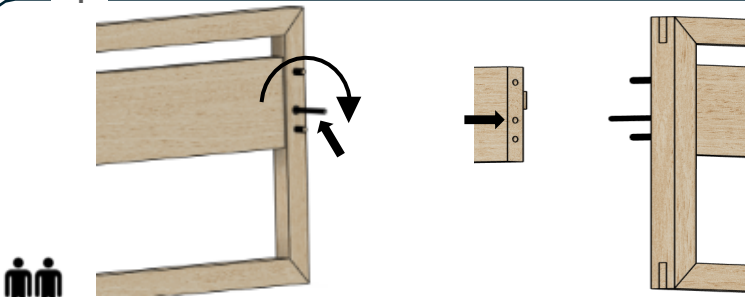
X12-King/Queen X8-Double



50x10mm Dowels **X8**

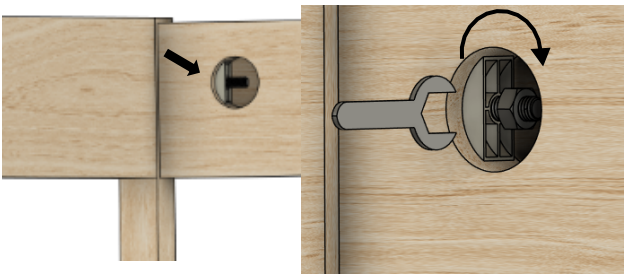


1



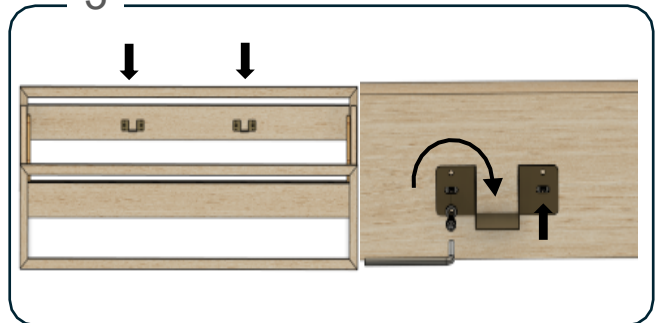
Insert the threaded rods into the pre-installed fittings of the legs. Position the sides so the holes line up with the fittings and insert the rods into the pre-drilled holes. Continue until all 4 threaded rods are inside the pre-drilled holes.

2



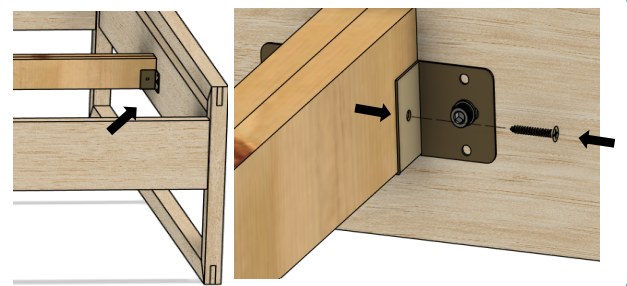
Insert halfmoon washers onto the threaded rods. Insert the nut onto the threaded rod and tighten with the mini 13mm wrench provided.

3



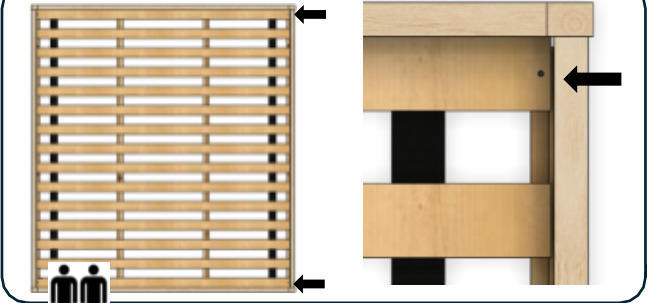
Use the pre-installed fittings to place the center support brackets into position. Use the M6 bolts to fix it into place using the provided hex key.

4



Place the center supports onto the brackets and tighten using the provided screws.

5



Roll the slats onto the bed making sure the first and last slat reaches both ends of the bed. Fix the slats into place by using the screws in the pre-drilled pilot holes.