

REQUIRED

2-3 Persons



INCLUDED

Table Top



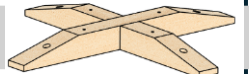
Table Legs X4



Legs Base



Top Supports



Half Moon Fittings
X4



13mm Mini Wrench



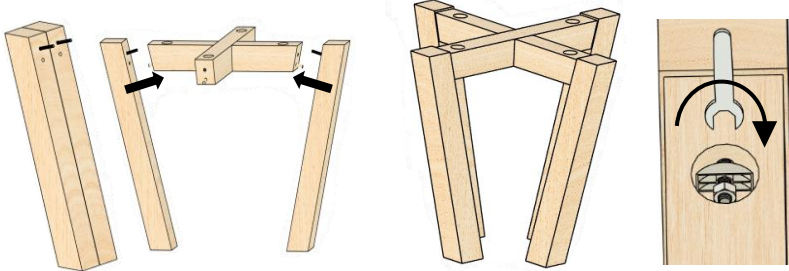
6mm Hex key



Bolts + washers x8

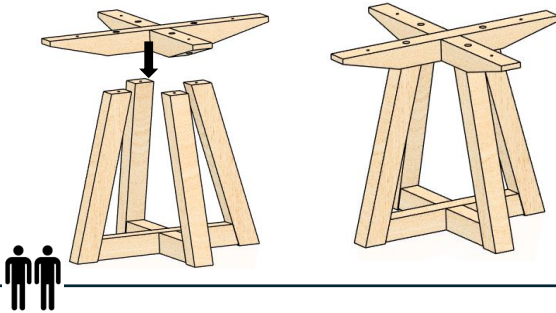


1



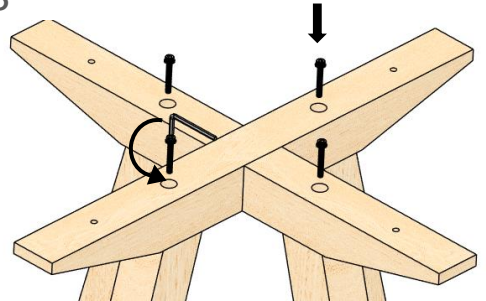
Insert the threaded rods into the pre-installed fittings of the legs. Position the legs at each end of the small cross and insert the rods into the pre-drilled holes. Insert the halfmoon washers and nuts onto rods and tighten using mini wrench.

2



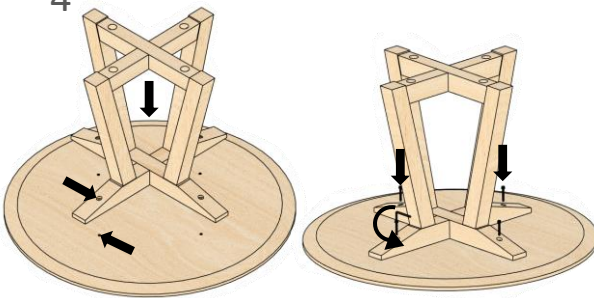
Position the big cross so the holes align with the pre-installed fittings on top of the legs.

3



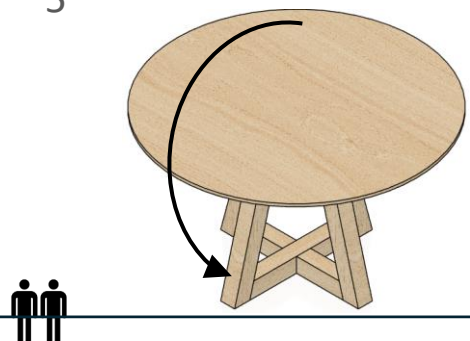
Insert the bolts with washers from above until it enters the fitting on the top of the leg. Tighten the bolts with the hex key provided.

4



Place table top upside down and flip the frame so the holes in the top rails align with the pre-installed fittings in the top. Insert the bolts with washers and tighten using the hex key provided.

5



Carefully, turn the table upright and ensure that not to rest the table on its side while doing so.